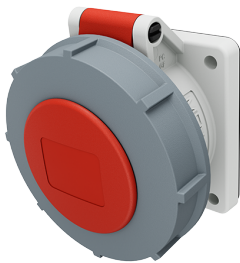


Panelmonterat uttag

Art.nr 234A

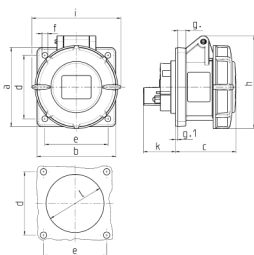


- skruvplintar
- rak

Tekniska data

Ampere	32 A
Poler	4 p
Volt	400 V
Klockposition	6 h
Hertz	50-60 Hz
Anslutningsteknologi	skruvkontakt
Kontakt	standard
Skyddstyp	IP67
Fläns	85x75 mm
Fästhål	60x60 mm
Vikt	293 g
Intyg om överensstämmelse	VDE, EAC

Mått



Drawing 1 MB 141	Amp. Poles	16			32		
		3	4	5	3	4	5
Dim. in mm	a	75	75	75	85	85	85
	b	75	75	75	75	75	75
	c	60	61	61	70	70	72
	d	60	60	60	60	60	60
	e	60	60	60	60	60	60
	f	5.5	5.5	5.5	5.5	5.5	5.5
	g	8	8	8	8	8	8
	g-1	2	2	2	2	2	2
	h	83	88	95	99	99	105
	i	78	85	96	103	103	110
	k	31	32	32	39	39	39
	l	43	52	54	58	58	65
Terminal for cond. cross section (mm ²) min.-max.		1.5	1.5	1.5	2.5	2.5	2.5
		-4	-4	-4	-10	-10	-10